

# Halifax Area

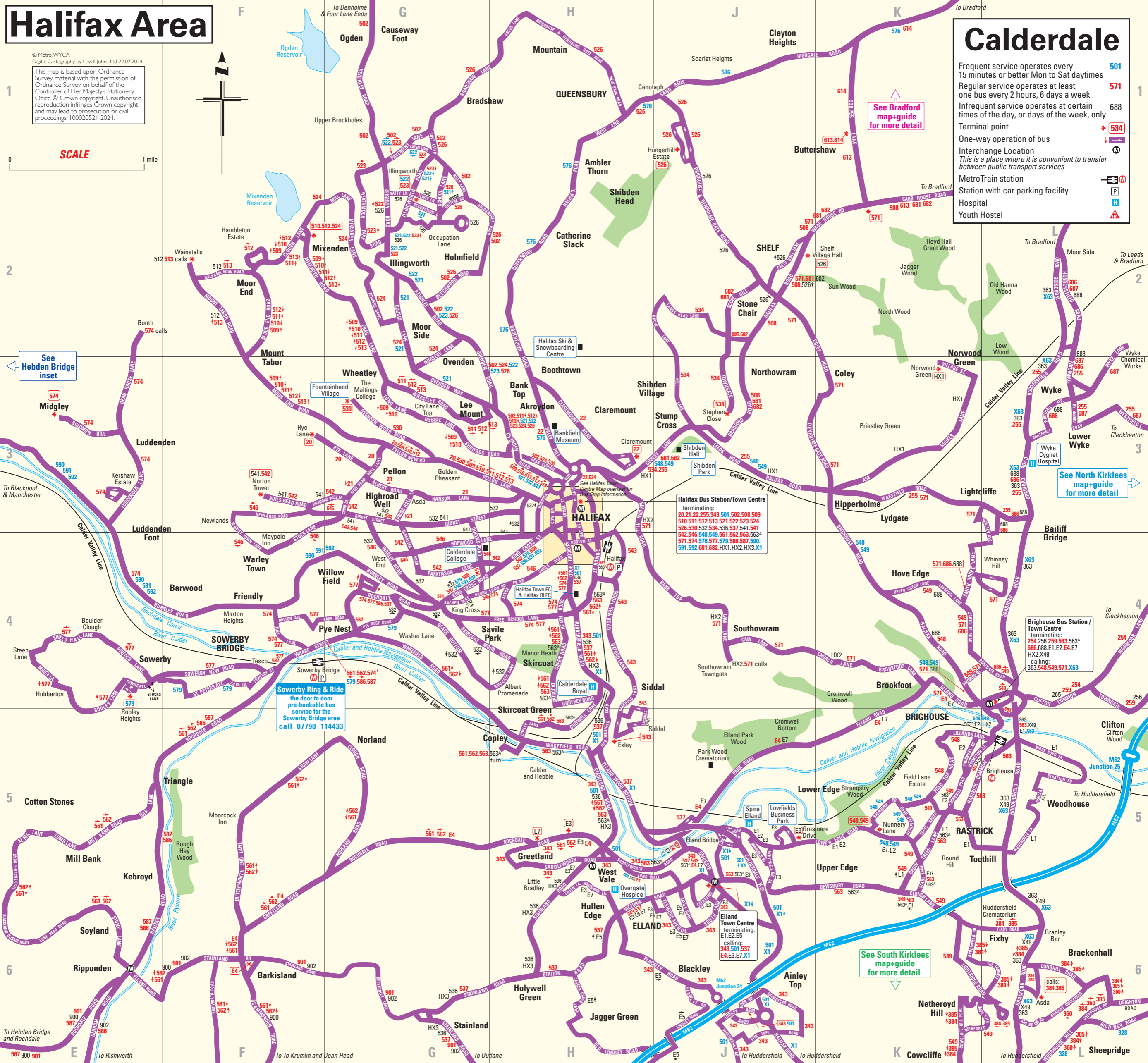
© Metro, WYCA  
Digital Cartography by Lovell Johns Ltd 22.07.2024  
This map is based upon Ordnance Survey material with the permission of Ordnance Survey on behalf of the Controller of Her Majesty's Stationery Office © Crown copyright. Unauthorised reproduction infringes Crown copyright and may lead to prosecution or civil proceedings. 100020521 2024.



SCALE 1 mile

# Calderdale

- Frequent service operates every 15 minutes or better Mon to Sat daytime **501**
- Regular service operates at least one bus every 2 hours, 6 days a week **571**
- Infrequent service operates at certain times of the day, or days of the week, only **688**
- Terminal point **\* 534**
- One-way operation of bus **↑ ↓**
- Interchange Location **M**  
*This is a place where it is convenient to transfer between public transport services*
- MetroTrain station **M**
- Station with car parking facility **P**
- Hospital **H**
- Youth Hostel **A**



See Hebden Bridge inset

See Bradford map+guide for more detail

See North Kirklee's map+guide for more detail

**Halifax Bus Station/Town Centre**  
terminating:  
20.21.22.25.34.35.50.502.508.509  
510.511.512.513.521.522.523.524  
526.530.532.534.536.537.541.541  
542.546.548.549.561.562.563.563A  
571.574.576.577.579.586.587.590  
591.592.681.682.HX1.HX2.HX3.X1

**Sowerby Ring & Ride**  
the door to door pre-bookable bus service for the Sowerby Bridge area  
call 07790 114433

**Brighouse Bus Station / Town Centre**  
terminating:  
254.256.259.563.563A  
686.688.E1.E2.E4.E7  
HX2.X49  
calling:  
363.548.549.571.X63

**Elland Town Centre**  
terminating:  
E1.E2.E5  
calling:  
343.501.537  
E4.E3.E7.X1

See South Kirklee's map+guide for more detail

calls: 384.385